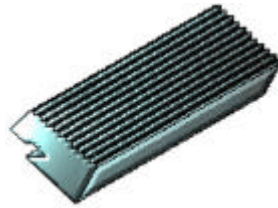




## Quality™ Chasers for Landis Style Die Heads



TANGENT DIE HEAD CHASERS

### ESSENTIALS:

The following pages list Quality™ Chasers for Landis style die heads in many popular sizes. The numbers listed across each row represent the standard chamfer angles that are available. Tools listed in the first column are stocked without the chamfer or cutting edge grind, hence the term "Semi-Finished". The following six columns list finished chasers with the final grinding operations complete. Please order finished numbers whenever possible.

These chasers are manufactured from premium grade M2 steel and hardened to exacting standards.

### SPECIFICS:

#### For proper order entry, you will need the following:

1. Number of sets required
2. Part Number
3. Material being threaded

#### If no part number is available, you must also supply:

4. Diameter, Pitch and Thread Form
5. Rake Angle (Cutting End Grind)
6. Blank Size (Width x Length)
7. Chamfer Angle
8. Die Head Model, Size and Serial Number
9. Number of chasers per set

\* For unusual or modified standard thread forms, a part print is required  
Special chasers "made to order" cannot be cancelled or returned for credit.

**TO ORDER**

**USE OUR 24 HOUR TOLL-FREE FAX LINE**

**800-562-7799**

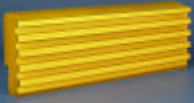
OR

**CALL OUR CUSTOMER SERVICE DEPT.**

**586-752-5555**

**MONDAY - FRIDAY**

**8:00 AM - 5:00 PM EST**



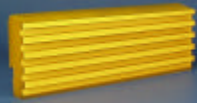
Quality™ CHASERS FOR LANDIS STYLE DIE HEADS  
**AMERICAN STANDARD PIPE THREADS**  
**NPT & NPS**

1

THREAD PITCH	BLANK SIZE	PRICE CODE	STANDARD CHAMFER ANGLES						
			SEMI FINISHED	45	30 SHORT	20 SHORT	20 LONG	15 SHORT	15 LONG
<b>27 NPT</b> (TAPER IN CHASER)	5/8 x 1 1/8	PF	92951	21401	21402	21403	21404	21405	21406
	3/4 x 1 5/8	PK	92953	21407	21408	21409	21410	21411	21412
<b>27 NPT</b> (TAPER IN HOLDER)	5/8 x 1 1/8	PF	92955	21413	21414	21415	21416	21417	21418
	3/4 x 1 5/8	PO	92957	21419	21420	21421	21422	21423	21424
<b>27 NPS</b>	5/8 x 1 1/8	PF	92959	21425	21426	21427	21428	21429	21430
	3/4 x 1 5/8	PK	92961	21431	21432	21433	21434	21435	21436
<b>18 NPT</b> (TAPER IN CHASER)	5/8 x 1 1/8	PF	92963	21437	21438	21439	21440	21441	21442
	3/4 x 1 5/8	PK	92965	21443	21444	21445	21446	21447	21448
	15/16 x 2 1/8	PT	92967	21449	21450	21451	21452	21453	21454
<b>18 NPT</b> (TAPER IN HOLDER)	5/8 x 1 1/8	PJ	92969	21455	21456	21457	21458	21459	21460
	3/4 x 1 5/8	PO	92971	21461	21462	21463	21464	21465	21466
	15/16 x 2 1/8	PP	92973	21467	21468	21469	21470	21471	21472
	1 3/64 X 4	QJ	92975	21473	21474	21475	21476	21477	21478
<b>18 NPS</b>	5/8 x 1 1/8	PF	92977	21479	21480	21481	21482	21483	21484
	3/4 x 1 5/8	PK	92979	21485	21486	21487	21488	21489	21490
	15/16 x 2 1/8	PP	92981	21491	21492	21493	21494	21495	21496
	1 3/64 X 4	QJ	92983	21497	21498	21499	21500	21501	21502
<b>14 NPT</b> (TAPER IN CHASER)	5/8 x 1 1/8	PF	92985	21503	21504	21505	21506	21507	21508
	3/4 x 1 5/8	PK	92987	21509	21510	21511	21512	21513	21514
	15/16 x 2 1/8	PT	92989	21515	21516	21517	21518	21519	21520
<b>14 NPT</b> (TAPER IN HOLDER)	5/8 x 1 1/8	PF	92991	21521	21522	21523	21524	21525	21526
	3/4 x 1 5/8	PK	92993	21527	21528	21529	21530	21531	21532
	15/16 x 2 1/8	PP	92995	21533	21534	21535	21536	21537	21538
	1 x 4	PU	92997	21539	21540	21541	21542	21543	21544
	1 3/64 x 3	QE	92999	21545	21546	21547	21548	21549	21550
	1 3/64 X 4	QJ	93001	21551	21552	21553	21554	21555	21556
<b>14 NPS</b>	5/8 x 1 1/8	PF	93003	21557	21558	21559	21560	21561	21562
	3/4 x 1 5/8	PK	93005	21563	21564	21565	21566	21567	21568
	15/16 x 2 1/8	PP	93007	21569	21570	21571	21572	21573	21574
	1 x 4	PU	93009	21575	21576	21577	21578	21579	21580
	1 3/64 x 3	QE	93011	21581	21582	21583	21584	21585	21586
	1 3/64 x 4	QJ	93013	21587	21588	21589	21590	21591	21592
<b>11.5 NPT</b> (TAPER IN CHASER)	15/16 x 2 1/8	PT	93015	21593	21594	21595	21596	21597	21598
<b>11.5 NPT</b> (TAPER IN HOLDER)	15/16 x 2 1/8	PP	93017	21599	21600	21601	21602	21603	21604
	1 3/64 x 4	QJ	93019	21605	21606	21607	21608	21609	21610
	1 1/4 X 2 3/4	QT	93021	21611	21612	21613	21614	21615	21616
	1 1/4 X 4	QY	93023	21617	21618	21619	21620	21621	21622
<b>11.5 NPS</b>	15/16 x 2 1/8	PP	93025	21623	21624	21625	21626	21627	21628
	1 3/64 x 4	QJ	93027	21629	21630	21631	21632	21633	21634
	1 1/4 X 2 3/4	QT	93029	21635	21636	21637	21638	21639	21640
	1 1/4 X 4	QY	93031	21641	21642	21643	21644	21645	21646
<b>8 NPT</b> (TAPER IN HOLDER)	15/16 x 2 1/8	PP	93033	21647	21648	21649	21650	21651	21652
	2 1/4 X 5	RN	93035	21653	21654	21655	21656	21657	21658
<b>8 NPS</b>	15/16 x 2 1/8	PP	93037	21659	21660	21661	21662	21663	21664
	2 1/4 X 5	RN	93039	21665	21666	21667	21668	21669	21670

Quality™ CHASERS for  
**LANDIS STYLE DIE HEADS**

RED = Normally available for IMMEDIATE SHIPMENT



**Quality™ CHASERS FOR LANDIS STYLE DIE HEADS**  
**AMERICAN STANDARD PIPE THREADS**  
**DROP TOOTH**

**2**

THREAD PITCH	BLANK SIZE	PRICE CODE	STANDARD CHAMFER ANGLES			
			SEMI FINISHED	15 SHORT	15 LONG	20 SHORT 20 LONG
<b>27P DT</b>	15/16 x 2 1/8	<b>PP</b>	<b>92958</b>			31421 31422
<b>18P DT</b>	15/16 x 2 1/8	<b>PP</b>	<b>92974</b>			31469 31470
<b>14 P DT</b>	15/16 x 2 1/8	<b>PP</b>	<b>92996</b>			31535 31536
	1 3/64 x 4	<b>QJ</b>	<b>93002</b>	31555	31556	
<b>11 1/2P DT</b>	1 1/4 x 2 3/4	<b>QT</b>	<b>93030</b>	31615	31616	
	1 1/4 x 4	<b>QY</b>	<b>93024</b>	31621	31622	
<b>8P DT 4/set</b>	2 1/4 x 5	<b>RN</b>	<b>93036</b>	31657	31658	
	2 1/4 x 5	<b>RN</b>	<b>93036</b>	31657 N	31658 N	
<b>8P DT 6/set</b>	2 1/4 x 5	<b>WC</b>	<b>93561</b>	31659	31660	

**Quality™ CHASERS for  
LANDIS STYLE DIE HEADS**

**RED** = Normally available for IMMEDIATE SHIPMENT

All chasers have standard 22° rake and standard lead for the end grind. All are taper-in-holder.

Part numbers coded with "N" are configured for use on 16TXX Lanco die heads that require a set screw notch. Otherwise, they are identical to the standard tool.