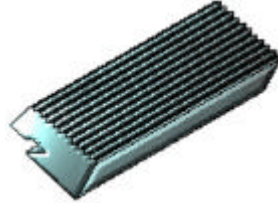




Quality Chaser Company 120 E. Pond Drive Romeo, MI U.S.A.

## Quality™ Chasers for Landis Style Die Heads



TANGENT DIE HEAD CHASERS

### ESSENTIALS:

The following pages list Quality™ Chasers for Landis style die heads in many popular sizes. The numbers listed across each row represent the standard chamfer angles that are available. Tools listed in the first column are stocked without the chamfer or cutting edge ground, hence the term "Semi-Finished". The following six columns list finished chasers with the final grinding operations complete. Please order finished numbers whenever possible.

These chasers are manufactured from premium grade M2 steel and hardened to exacting standards.

### SPECIFICS:

**For proper order entry, you will need the following:**

1. Number of sets required
2. Part Number
3. Material being threaded

**If no part number is available, you must also supply:**

4. Pitch of thread to be cut
5. Thread Form (UN, ACME, METRIC, PIPE, etc.)
6. Blank Size (width x length)
7. Chamfer Angle and 'Long' or 'Short'

**TO ORDER**

**USE OUR 24 HOUR TOLL-FREE FAX LINE**

**800-562-7799**

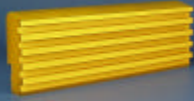
**OR**

**CALL OUR CUSTOMER SERVICE DEPT.**

**586-752-5555**

**MONDAY - FRIDAY**

**8:00 AM - 5:00 PM EST**



Quality™ CHASERS FOR LANDIS STYLE DIE HEADS

AMERICAN NATIONAL FORMS - UNC, UNF, UNS  
RIGHT HAND OR LEFT HAND THREADS

1

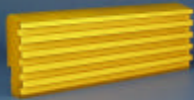
THREAD PITCH	BLANK SIZE	PRICE CODE	STANDARD CHAMFER ANGLES							
			SEMI FINISHED	45	30	20	20	15	15	
				SHORT	SHORT	LONG	SHORT	LONG		
40 UN	1/2 x 1 R.D.=.187	PE	92501	20001	20002	20003	20004	20005	20006	
	1/2 x 1 R.D.=.257	PE	92503	20007	20008	20009	20010	20011	20012	
	5/8 x 1 1/8	PJ	92505	20013	20014	20015	20016	20017	20018	
	3/4 x 1 5/8	PO	92507	20019	20020	20021	20022	20023	20024	
	15/16 x 2 1/8	PT	92509	20025	20026	20027	20028	20029	20030	
36 UN	1/2 x 1 R.D.=.187	PE	92511	20031	20032	20033	20034	20035	20036	
	1/2 x 1 R.D.=.257	PE	92513	20037	20038	20039	20040	20041	20042	
	5/8 x 1 1/8	PJ	92515	20043	20044	20045	20046	20047	20048	
	3/4 x 1 5/8	PO	92517	20049	20050	20051	20052	20053	20054	
	15/16 x 2 1/8	PT	92519	20055	20056	20057	20058	20059	20060	
32 UN	1/2 x 1 R.D.=.187	PE	92521	20061	20062	20063	20064	20065	20066	
	1/2 x 1 R.D.=.257	PE	92523	20067	20068	20069	20070	20071	20072	
	5/8 x 1 1/8	PI	92525	20073	20074	20075	20076	20077	20078	
	3/4 x 1 5/8	PN	92527	20079	20080	20081	20082	20083	20084	
	15/16 x 2 1/8	PT	92529	20085	20086	20087	20088	20089	20090	
28 UN	1/2 x 1 R.D.=.187	PD	92531	20091	20092	20093	20094	20095	20096	
	1/2 x 1 R.D.=.257	PD	92533	20097	20098	20099	20100	20101	20102	
	5/8 x 1 1/8	PF	92535	20103	20104	20105	20106	20107	20108	
	3/4 x 1 5/8	PN	92537	20109	20110	20111	20112	20113	20114	
	15/16 x 2 1/8	PS	92539	20115	20116	20117	20118	20119	20120	
	1 x 4	PY	92541	20121	20122	20123	20124	20125	20126	
	1 3/64 x 3	QH	92543	20127	20128	20129	20130	20131	20132	
	1 3/64 x 4	QM	92545	20133	20134	20135	20136	20137	20138	
24 UN	1/2 x 1 R.D.=.187	PA	92547	20139	20140	20141	20142	20143	20144	
	1/2 x 1 R.D.=.257	PA	92549	20145	20146	20147	20148	20149	20150	
	5/8 x 1 1/8	PF	92551	20151	20152	20153	20154	20155	20156	
	3/4 x 1 5/8	PK	92553	20157	20158	20159	20160	20161	20162	
	15/16 x 2 1/8	PP	92555	20163	20164	20165	20166	20167	20168	
	1 x 4	PY	92557	20169	20170	20171	20172	20173	20174	
	1 3/64 x 3	QH	92559	20175	20176	20177	20178	20179	20180	
	1 3/64 x 4	QM	92561	20181	20182	20183	20184	20185	20186	
20 UN	1/2 x 1 R.D.=.187	PA	92563	20187	20188	20189	20190	20191	20192	
	1/2 x 1 R.D.=.257	PA	92565	20193	20194	20195	20196	20197	20198	
	5/8 x 1 1/8	PF	92567	20199	20200	20201	20202	20203	20204	
	3/4 x 1 5/8	PK	92569	20205	20206	20207	20208	20209	20210	
	15/16 x 2 1/8	PP	92571	20211	20212	20213	20214	20215	20216	
	1 x 4	PY	92573	20217	20218	20219	20220	20221	20222	
	1 3/64 x 3	QE	92575	20223	20224	20225	20226	20227	20228	
	1 3/64 x 4	QJ	92577	20229	20230	20231	20232	20233	20234	
18 UN	1/2 x 1 R.D.=.187	PA	92579	20235	20236	20237	20238	20239	20240	
	1/2 x 1 R.D.=.257	PA	92581	20241	20242	20243	20244	20245	20246	
	5/8 x 1 1/8	PF	92583	20247	20248	20249	20250	20251	20252	
	3/4 x 1 5/8	PK	92585	20253	20254	20255	20256	20257	20258	
	15/16 x 2 1/8	PP	92587	20259	20260	20261	20262	20263	20264	
	1 x 4	PY	92589	20265	20266	20267	20268	20269	20270	
	1 3/64 x 3	QE	92591	20271	20272	20273	20274	20275	20276	
	1 3/64 x 4	QJ	92593	20277	20278	20279	20280	20281	20282	
16 UN	1/2 x 1 R.D.=.187	PA	92595	20283	20284	20285	20286	20287	20288	
	1/2 x 1 R.D.=.257	PA	92597	20289	20290	20291	20292	20293	20294	
	5/8 x 1 1/8	PF	92599	20295	20296	20297	20298	20299	20300	
	3/4 x 1 5/8	PK	92601	20301	20302	20303	20304	20305	20306	
	15/16 x 2 1/8	PP	92603	20307	20308	20309 T	20310	20311	20312	
	1 x 4	PY	92605	20313	20314	20315	20316	20317	20318	
	1 3/64 x 3	QE	92607	20319	20320	20321	20322	20323	20324	
	1 3/64 x 4	QJ	92609	20325	20326	20327	20328	20329	20330	
14 UN	1/2 x 1 R.D.=.187	PA	92611	20331	20332	20333	20334	20335	20336	
	1/2 x 1 R.D.=.257	PA	92613	20337	20338	20339	20340	20341	20342	
	5/8 x 1 1/8	PF	92615	20343	20344	20345	20346	20347	20348	
	3/4 x 1 5/8	PK	92617	20349	20350	20351	20352	20353	20354	
	15/16 x 2 1/8	PP	92619	20355	20356	20357 T	20358	20359	20360	
	1 x 4	PY	92621	20361	20362	20363	20364	20365	20366	
	1 3/64 x 3	QE	92623	20367	20368	20369	20370	20371	20372	
	1 3/64 x 4	QJ	92625	20373	20374	20375	20376	20377	20378	

Quality™ CHASERS for LANDIS STYLE DIE HEADS

RD = Root Diameter

T = Also stocked in TiN Coat

RED = Normally available for IMMEDIATE SHIPMENT



Quality™ CHASERS FOR LANDIS STYLE DIE HEADS

AMERICAN NATIONAL FORMS - UNC, UNF, UNS  
RIGHT HAND OR LEFT HAND THREADS

2

THREAD PITCH	BLANK SIZE	PRICE CODE	STANDARD CHAMFER ANGLES						
			SEMI FINISHED	45	30 SHORT	20 SHORT	20 LONG	15 SHORT	15 LONG
13 UN	1/2 x 1 R.D.=.187	PA	92627	20379	20380	20381	20382	20383	20384
	1/2 x 1 R.D.=.257	PA	92629	20385	20386	20387	20388	20389	20390
	5/8 x 1 1/8	PF	92631	20391	20392	20393	20394	20395	20396
	3/4 x 1 5/8	PK	92633	20397	20398	20399	20400	20401	20402
	15/16 x 2 1/8	PP	92635	20403	20404	20405 T	20406 T	20407	20408
	1 x 4	PY	92637	20409	20410	20411	20412	20413	20414
	1 3/64 x 3	QE	92639	20415	20416	20417	20418	20419	20420
1 3/64 x 4	QJ	92641	20421	20422	20423	20424 T	20425	20426	
12 UN	5/8 x 1 1/8	PF	92643	20427	20428	20429	20430	20431	20432
	3/4 x 1 5/8	PK	92645	20433	20434	20435	20436	20437	20438
	15/16 x 2 1/8	PP	92647	20439	20440	20441 T	20442	20443	20444
	1 x 4	PY	92649	20445	20446	20447	20448	20449	20450
	1 3/64 x 3	QE	92651	20451	20452	20453	20454	20455	20456
1 3/64 x 4	QJ	92653	20457	20458	20459	20460 T	20461	20462	
11 UN	5/8 x 1 1/8	PF	92655	20463	20464	20465	20466	20467	20468
	3/4 x 1 5/8	PK	92657	20469	20470	20471	20472	20473	20474
	15/16 x 2 1/8	PP	92659	20475	20476	20477 T	20478 T	20479	20480
	1 x 4	PY	92661	20481	20482	20483	20484	20485	20486
	1 3/64 x 3	QE	92663	20487	20488	20489	20490	20491	20492
1 3/64 x 4	QJ	92665	20493	20494	20495	20496 T	20497	20498	
10 UN	3/4 x 1 5/8	PK	92667	20499	20500	20501	20502	20503	20504
	15/16 x 2 1/8	PP	92669	20505	20506	20507	20508 T	20509	20510
	1 x 4	PY	92671	20511	20512	20513	20514	20515	20516
	1 3/64 x 3	QE	92673	20517	20518	20519	20520	20521	20522
	1 3/64 x 4	QJ	92675	20523	20524	20525	20526 T	20527	20528
9 UN	3/4 x 1 5/8	PK	92677	20529	20530	20531	20532	20533	20534
	15/16 x 2 1/8	PP	92679	20535	20536	20537	20538	20539	20540
	1 x 4	PY	92681	20541	20542	20543	20544	20545	20546
	1 3/64 x 3	QE	92683	20547	20548	20549	20550	20551	20552
	1 3/64 x 4	QJ	92685	20553	20554	20555	20556 T	20557	20558
8 UN	15/16 x 2 1/8	PP	92687	20559	20560	20561 T	20562	20563	20564
	1 x 4	PY	92689	20565	20566	20567	20568	20569	20570
	1 1/16 x 4	QD	92691	20571	20572	20573	20574	20575	20576
	1 3/64 x 3	QE	92693	20577	20578	20579	20580	20581	20582
	1 3/64 x 4	QJ	92695	20583	20584	20585 T	20586 T	20587	20588
	1 7/64 x 4	QS	92697	20589	20590	20591	20592	20593	20594
7 UN	15/16 x 2 1/8	PP	92699	20595	20596	20597	20598	20599	20600
	1 x 4	PY	92701	20601	20602	20603	20604	20605	20606
	1 1/16 x 4	QD	92703	20607	20608	20609	20610	20611	20612
	1 3/64 x 3	QI	92705	20613	20614	20615	20616	20617	20618
	1 3/64 x 4	QM	92707	20619	20620	20621	20622 T	20623	20624
	1 7/64 x 4	QO	92709	20625	20626	20627	20628 T	20629	20630
6 UN	1 x 4	PY	92711	20631	20632	20633	20634	20635	20636
	1 1/16 x 4	QD	92713	20637	20638	20639	20640	20641	20642
	1 3/64 x 3	QI	92715	20643	20644	20645	20646	20647	20648
	1 3/64 x 4	QM	92717	20649	20650	20651	20652 T	20653	20654
	1 7/64 x 4	QO	92719	20655	20656	20657	20658 T	20659	20660
	1 1/2 x 5	RL	92721	20661	20662	20663	20664	20665	20666
5 1/2 UN	1 1/2 x 4	RG	92723	20667	20668	20669	20670	20671	20672
	1 1/2 x 5	RI	92725	20673	20674	20675	20676	20677	20678
5 UN	1 1/2 x 4	RG	92727	20679	20680	20681	20682	20683	20684
	1 1/2 x 5	RI	92729	20685	20686	20687	20688 T	20689	20690
4 1/2 UN	1 1/2 x 4	RG	92731	20691	20692	20693	20694	20695	20696
	1 1/2 x 5	RI	92733	20697	20698	20699	20700 T	20701	20702 T
4 UN	1 1/2 x 4	RG	92735	20703	20704	20705	20706	20707	20708
	1 1/2 x 5	RI	92737	20709	20710	20711	20712 T	20713	20714 T

Quality™ CHASERS for LANDIS STYLE DIE HEADS

RD = Root Diameter

T = Also stocked in TiN Coat

RED = Normally available for IMMEDIATE SHIPMENT